

July 2022 through June 2023



# Annual Report



Technical Assistance, Training and Innovation



# Vision

All people are full community members recognized for their contributions.



# Mission

Promoting equitable employment for people with developmental disabilities through innovation, training and technical assistance.





## Our 5 Strategic Priorities



**Foster diversity,  
inclusion, & equity**



**Innovative training &  
technical assistance**



**Create opportunities for  
people with developmental  
disabilities to lead & teach**



**Maintain dynamic,  
healthy board & staff**



**Sustain thoughtful  
growth**

# FOSTERING DIVERSITY, EQUITY & INCLUSION



DEI Capacity Building - Expanding Access & Engagement



## Diversity, Equity and Inclusion (DEI) Capacity Building

Wise has organized its DEI work around the following topics to ensure all people are full community members recognized for their contributions.

**Expanding Access & Engagement**

**Funding, Policy & Advocacy**

**Fostering Relationships**

**Training Content**

**Internal Learning & Processes**



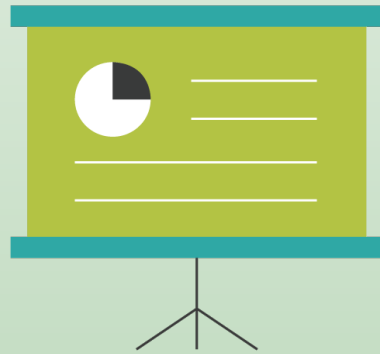
# Expanding Access & Engagement

Wise offered alternative language options in trainings, new content, and events as well as increased the native-speaking professionals that presented content in languages other than English.



A featured multi-lingual training offer is The Clark County Family Training Series. Content is offered in Spanish with resources and training recordings available on the [Clark Family Resources website](#).

# INNOVATIVE TRAINING AND TECHNICAL ASSISTANCE



Webinars - Wise Learning Center - Agency Teams - WOA 100  
WOA 200 – Website Portfolios – Specialized Trainings



# Webinar Series

The Wise weekly webinar series was offered free to the public and delivered new content to the Learning Center.

## Audience

**1168** attendees  
**34** Washington counties  
**22** US states & Canada



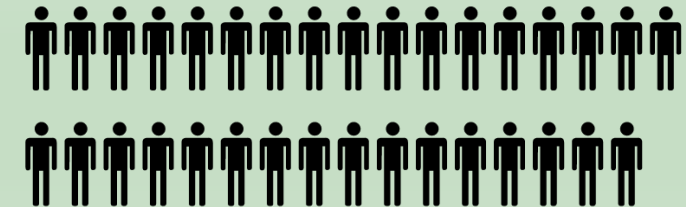
## Presenters

**33** unique presenters  
**60%** identified as someone with a disability



## Content

**36** 1-hour webinars







# Wise Learning Center

Our online learning center hosts over **350** hours of on-demand content.



**1288 new users**



**38 States, Canada & NZ**



**86 New Courses**



**18,388 Courses Completed**



**110 CESP Approved Courses**

## ACCESSIBILITY HIGHLIGHT

### All new courses include:

- Recorded ASL interpretation
- Closed captions and transcripts
- Speed adjustable trainings

[More information on the Learning Center Webpage.](#)



# Agency Teams

Wise offers access to the Wise Learning Center as a staff training and onboarding hub which allows employment agencies to self-manage their own teams of learners, customize training content and track data online.

**22** total participating agencies  
**6** Washington agencies added this year

*“The platform is set up in a very intuitive way and is easy to use. Between the live video coaching sessions and the course material, the platform was easy to navigate and set up, and most questions were answered by simply spending more time in the system.”*  
- James, Opportunity Systems





# Wise Online Academy (WOA) 100

The WOA 100 Series is designed to provide employment professionals the knowledge and skills needed to deliver employment services to employers and people with disabilities.

## THE STUDENTS

**241 students** *(25% increase from 21-22 FY)*

**8 US States, New Zealand & Canada**

## ACCREDITED

ACRE Customized Employment Certification

ACRE accreditation awarded to **114** students

*(48% increase from 21-22 FY)*

## THE COURSES

Discovery & Person-Centered Planning

Job Development and Marketing

Systematic Instruction

Social Security Work Incentives

**Estimated 43 hours of course time**

*" I have never had the opportunity to take a training through Wise before and look forward to attending more trainings. I have been very impressed with the quality of the training format, material and presenters...."*





# Wise Online Academy (WOA) 200

The WOA 200 is an advanced, intensive course which is focused on employment professionals who are actively providing community-based employment services. Students are supported through practicum experience to apply the skills learned to achieve successful employment outcomes.



**22** students graduated the course



**2** US States (Washington & Georgia) and Canada



Estimated **90** hours of course time

***"[I appreciated] the opportunity to build relationships. This job feels a lot less like an island now to me."***



*\*Pending professional Customized Employment endorsement for ACRE*

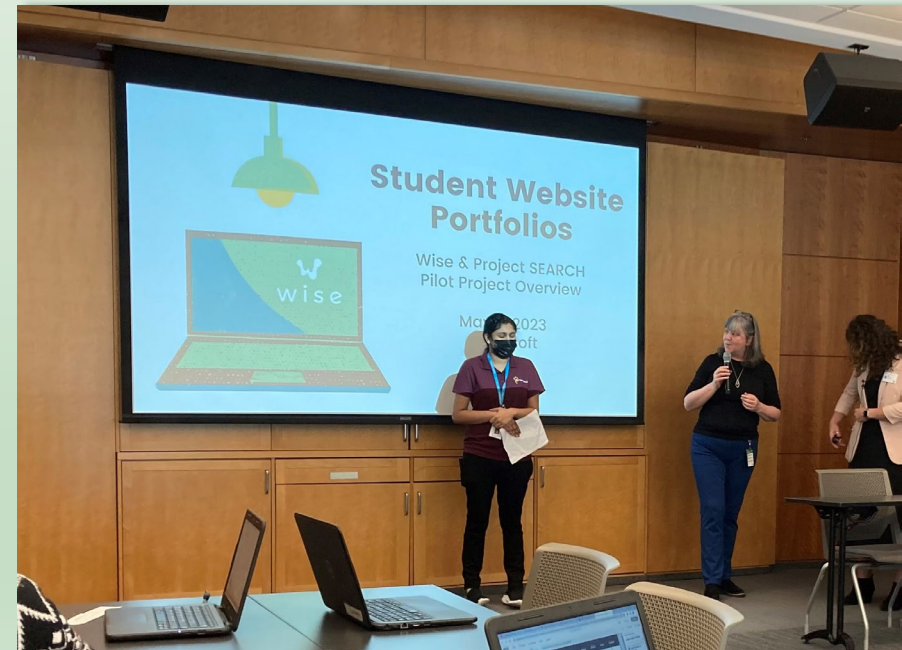
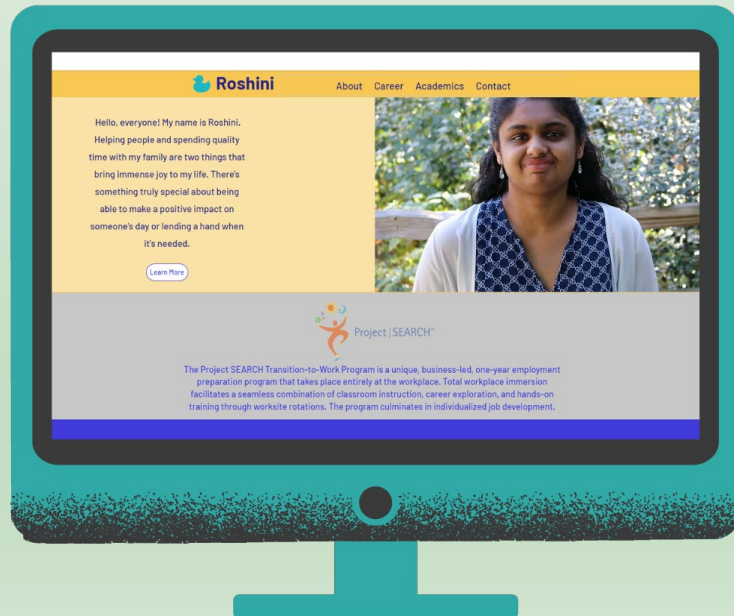
**Students developed 36 jobs while in the course.**



# Website Portfolio Pilot

A website portfolio is an online tool designed to showcase a person's experience and skillset. Wise collaborated with Seattle Children's Project SEARCH to support **6 students** in creating website portfolios with funding from King County, WA. In May 2023, the students were invited to Microsoft to present their websites and participate in reverse interviews.

## View Roshini's Website Portfolio.



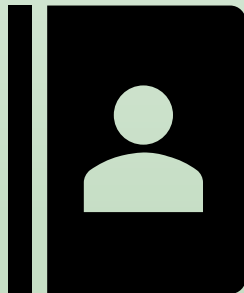
*Project SEARCH student, Roshini, presenting their student portfolio at Microsoft.*



# Washington State Communities of Practice

## Job Foundation

Organized to increase employment outcomes for young adults with intellectual and developmental disabilities.



## County Coordinators

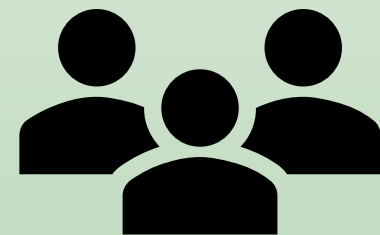
Organized to advance the role of County Coordinators in leading WA state employment and community inclusion services.

### Topical area presentations included:

- The Law RCW 71.A.14
- History and Guiding Values
- Monitoring Contracts
- Budget Management, Data & Reporting
- Managing Contract

## Community Inclusion

Organized to build the capacity to implement dual services (Employment and Community Inclusion) statewide.





# Specialized Training Offerings

Wise offers cohort-style training to build capacity and equip professionals in specialized service areas.

## Plan to Placement

Professional staff and job seekers with disabilities apply Person-Centered Employment planning to obtain jobs.

**21** participants from **3** cohorts in Washington State.



## Positive Behavior Support Specialization

Preparing professionals to consult, train and support with Positive Behavior Support principles.

**18** participants from **2** cohorts in Washington State



## Recruit, Cultivate and Retain

Preparing program management staff to build capacity and support the professional development of their teams.

**68** participants from **1** virtual and **1** in-person cohort in Washington State.



# CREATE OPPORTUNITIES FOR PEOPLE WITH DISABILITIES TO LEAD & TEACH







Wise promotes, supports and engages instructors with disabilities as teaching professionals in the field.



Featured presenter; Larry Hill.

### Learning From Our Best Teachers: Individuals with Disabilities Series

A series highlighting the lived experience of people with disabilities, hosted by Wise Associates Chuck Goodwin and Chuy Campuzano.

**23** sessions

**20** trainers with disabilities

[Watch a micro-learning video from the series.](#)

[View Wise Featured Training Partners.](#)

*"Some of the things that the presenter has been through were hard to hear. I think it is vitally important that they continue to share their story in order to bring awareness to how people with disabilities are treated within the real world."*

**60%** of our webinar sessions featured a presenter with disabilities.

# MAINTAIN DYNAMIC HEALTHY BOARD & STAFF



New Hires – Staff Anniversaries –  
Professional Development



## New Hires



**Anne-Marie Lake**  
Training & TA Manager



**Anthony Contreras-Sanchez**  
Training & TA Manager



**David Murahashi**  
Training & TA Manager



**Ngoc Duong**  
Staff Accountant



**Tanya Morrow**  
Admin Assistant

## Anniversaries



**Charly Walters**  
**5 years**  
Senior TA & Training  
Manager



**Shaun Wood**  
**10 years**  
Senior TA & Training  
Manager



**Monica Zumach**  
**20 years**  
Director of Training &  
Technical Assistance



## Professional Development & Staff Activities

Each year, Wise considers the best way to develop staff through training and learning opportunities. In January 2023, staff trained with the [Grove Consultants](#) on Visual Facilitation for Project Managers and the Principles of Graphic Facilitation to deepen knowledge of skills and approaches for facilitating groups.

A full list of Wise board, staff, featured training partners and associates is available on [our website](#).



David, Anthony, Debbie, Tyler & Rebecca (left to right) at the Grove training.



Four posters are taped to a wall containing drawings and different skills of Wise staff.

# SUSTAIN THOUGHTFUL GROWTH



BenefitU – Statewide Events – Washington State Events – Rotary  
Partners for Work



# BenefitU

*Funded by WA State Developmental Disabilities Administration*

BenefitU is an individualized planning service and website for people to access information about their disability benefits when they need it.

### Service Center

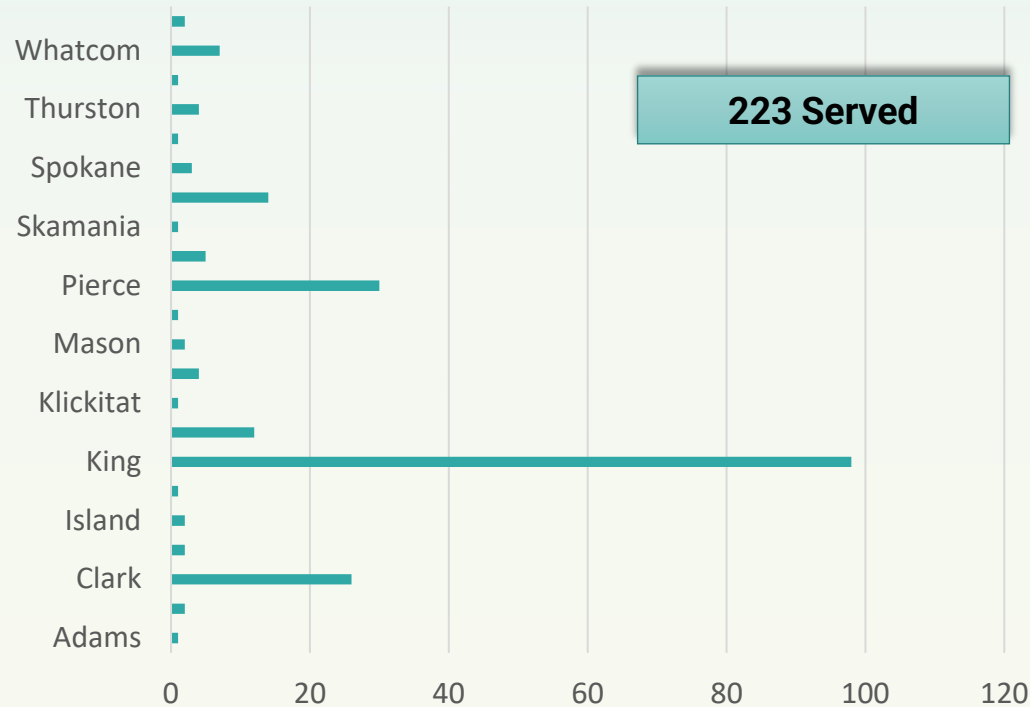
[www.benefitu.org/service-eligible/](http://www.benefitu.org/service-eligible/)

- Information and education
- Referrals to a planner, as needed

### DDA-Funded Certified Benefits Planning

- Individualized information and reporting
- Support in interacting with government entities

### Planning Services



### Individual and Family Information

- Videos
- Tools and handouts
- Request Benefits Planning Services

### Website

[www.benefitu.org](http://www.benefitu.org)

Engaged visits in the 2022-23 Fiscal Year:

**26,694**



# Statewide Events

## WA State Community Summit

The Community Summit continues a long tradition of conferences that have focused on expanding access to supported employment, supported living and assistive technology. The 2023 Community Summit: A Decade of Community returned to the Wenatchee Convention Center after 3 years of being offered as a virtual-only event. Watch the [Decade of Community video](#).



**558** In-person attendees

**135** Virtual attendees

*The Community Summit is sponsored by DSHS Developmental Disabilities Administration Roads to Community Living, WA State Counties and DVR.*

## Georgia's National Disability Employment Awareness Month Celebration

The State of Georgia celebrated its 2nd annual virtual celebration of National Disability Employment Awareness Month. The Regional Gardens, providers and community members across Georgia State, partnered with GAPSE to plan and host the event.



**79** attendees

**13** people awarded

[View the recording of the event](#)



# Washington State Events

## Clark County Employment Awards

Clark County celebrated local Individuals and Employers at the 22<sup>nd</sup> annual Clark County Disability Employment Awareness Month Awards event. The event included an award ceremony, local speakers, live music and keynote from esteemed poet and disability advocate LeDerick Horne.

Partners include the Clark County Developmental Disabilities Advisory Board, Ryonet, Clark/Vancouver Television (CVTV) and Clark County Public Transit (C-Tran).

- **125 in-person & 65 virtual attendees**
- **5 people were awarded**

[Clark County Supported Employment Success Stories YouTube playlist](#)



2022 Clark County winner poses with award.

## Snohomish County Business Breakfast

Snohomish County Developmental Disabilities sponsored a breakfast networking event with local businesses in Snohomish County. The event was organized by a steering committee of Snohomish County Employment Service Providers, Snohomish County staff and Wise with the intention of building community and informing local employers.

**42 community members joined**



Community members sit at round tables at the Nile Shrine Golf Course.





## Partners for Work



Partners for Work (PFW) is a Rotary District 5030 project since 2008 in 29 Rotary Clubs in King County, WA. The purpose is to engage Rotarians and their networks to increase the employment of people with disabilities.

**Through PFW, over 175 adults have been hired!**

More information on the [Partners for Work webpage](#).

### Year in Review:

- Clubs worked to fund and expand greeter positions.
- Clubs facilitated tours and job shadows, informational interviews and job seeker presentations of employment goals for up to **125** students.
- The Pacific Northwest Partners for Work Rotary Club was chartered. The club's 24 members act as a resource to other Rotary clubs to promote diversity, inclusion and accessibility for people with disabilities.
- PFW presented at the 2023 [Canadian Association of Supported Employment \(CASE\)](#) conference in Vancouver, Canada.



*Multi-club mock interview experience.*



*A Greeter in Snoqualmie.*