

July 2021 through June 2022



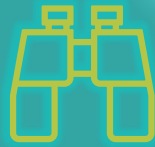
Annual Report

Technical Assistance, Training and Innovation



Vision

All people are full community members recognized for their contributions.



Mission

Promoting equitable employment for people with developmental disabilities through innovation, training and technical assistance.





Our 5 Strategic Priorities



**Foster diversity,
inclusion, & equity**



**Innovative training &
technical assistance**



**Create opportunities for
people with developmental
disabilities to lead & teach**



**Maintain dynamic,
healthy board & staff**



**Sustain thoughtful
growth**

MAINTAIN DYNAMIC HEALTHY BOARD & STAFF



◆ New Hires ◆ Staff Anniversaries



Anniversaries



Tyler Talcott
IT & Project Assistant
10 years



Brandi Monts
Senior Training & TA
Manager
10 years



Jaimie Laitinen
Senior Training & TA
Manager
15 years



Cesilee Coulson
Executive Director
25 years

New Hires



Angela Dirk
Senior Benefits Planner



Rebecca Roybal
LMS Administrator



Ryan Riggs
Digital Media Developer

FOSTERING DIVERSITY, EQUITY & INCLUSION



✦ Staff Professional Development ✦ Agency Capacity Building ✦ Trainings and Tools



LaVant Consulting delivered 6 All-staff workshops on Diversity, Equity and Inclusion topics.

Workshop Topics

- Equity & Language
- History
- Disability Services vs. Rights
- Disability Justice



Goals

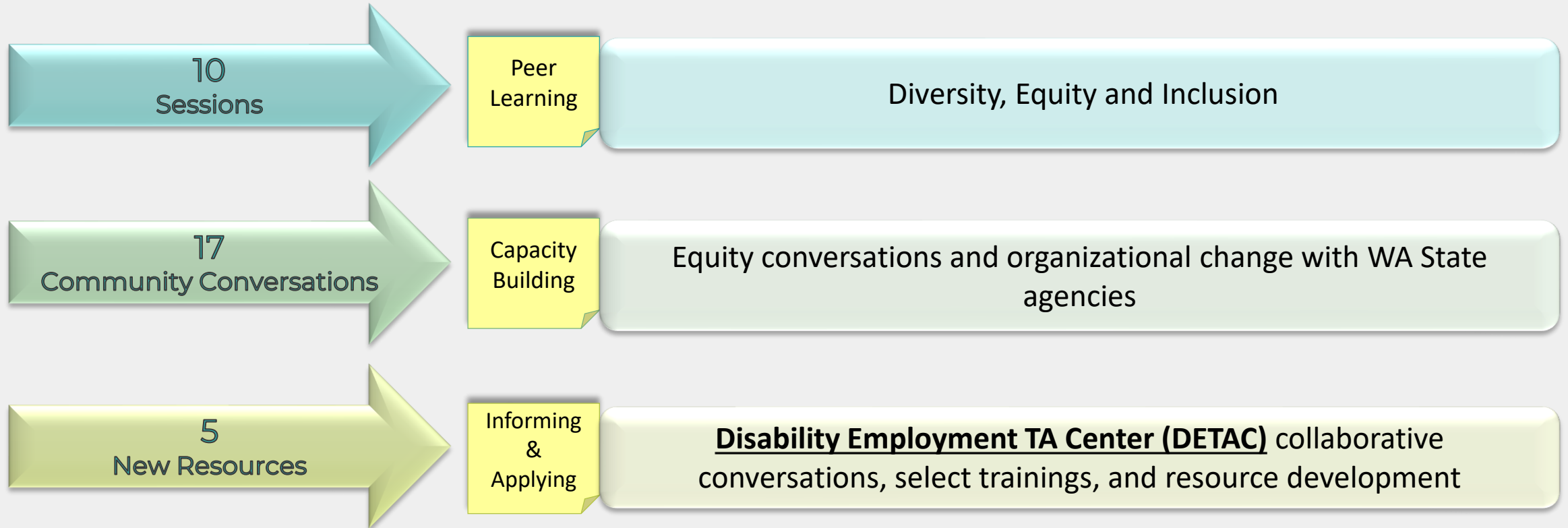
- Personal accountability
- Continuing internal education
- Increasing diversity of trainers
- Partnership with racial equity consultants

Total Staff Training Hours

249

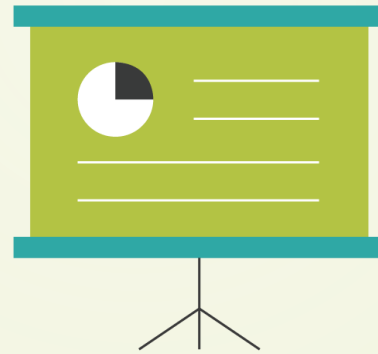


External DEI Work and Partnerships



- * **Tool:** [Infusing Intersectionality into Disability Employment Systems Change Efforts](#)
- * **Webinar:** [Overcoming Systemic Racism in the Education System to Build Equity](#)
- * **Webinar:** [Diversity, Equity and Inclusion Strategies to Promote Cultural Humility and Awareness](#)
- * **Podcast:** [Don't be Perfect Just be Huge](#)
- * **Tool:** [DETAC Snapshot Guide](#)

INNOVATIVE TRAINING AND TECHNICAL ASSISTANCE



- ◆ On-Demand Learning ◆ Webinars ◆ Wise Online Academy
- ◆ Specialized Training ◆ Innovative Initiatives

[View training attendance by county and/or agency.](#)



Wise Learning Center

*Our e-learning portal hosts over **316** hours of on-demand content.*



1302 new users



31 States and 3 Countries



112 New Courses



15,994 Courses Completed



110 CESP Approved Courses

NEW COLLECTIONS

COMMUNITY INCLUSION

Learn to build community and expand your relationships.

30-60-90 ONBOARDING

Learn the basics needed to provide professional community services.

DIVERSITY, EQUITY & INCLUSION

Explore Disability Justice, Advocacy and the intersection of disability with other identities.



Webinar Series

Delivered new content to the Learning Center via weekly live webinars.

Audience

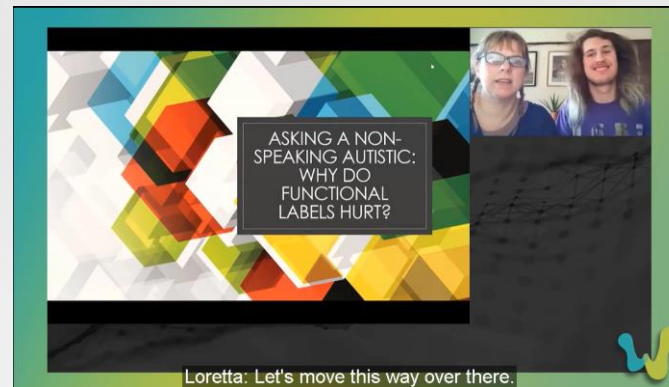
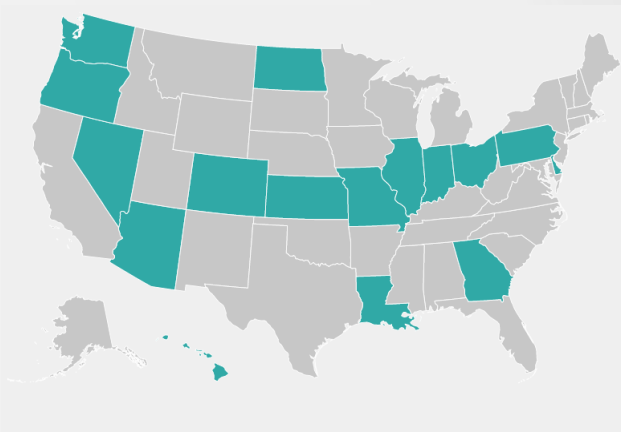
610 attendees
30 Washington counties
17 US states

Content

36 1-hour webinars
36 "brass tacks" videos

Presenters

33 unique presenters
55% identified as
someone with a disability





Wise Online Academy 100

Developing the skills to deliver quality supported employment services and prepare for the National APSE Certified Employment Service Professional (CESP) exam.

THE STUDENTS

480 students

8 US States

2 additional countries

ACCREDITED

ACRE Customized Employment Certification

ACRE accreditation awarded to **85** students

THE COURSES

Discovery & Person-Centered Planning

Job Development and Marketing

Systematic Instruction

Social Security Work Incentives

"I very much appreciated the excellent quality of the Wise ACRE class and content delivery by the instructors! It was informative, exciting and fun. I have worked with disabled individuals over 20 years and this class was a great way to learn and expand my knowledge.

Thank you. "

**- Verdice, Vocational Specialist,
Georgia**





Specialized Training Offerings

Plan to Placement

Professional staff and job seekers learn Person-Centered Employment planning to inform the job placement.

3 cohorts in Georgia and 1 in King County, Washington



Positive Behavior Support Specialization

Preparing professional staff to consult, train and support with PBS principles.

1 cohort in Washington State



Recruit, Cultivate and Retain

Preparing program management staff to build capacity and support the professional development of their teams.

2 cohorts in Washington State





2021-2022 Initiatives

Job Foundation Community of Practice



A series of workshops about the Job Foundation program and its purpose: To increase employment outcomes for young adults with intellectual and developmental disabilities.

[Job Foundation COP Session Recordings](#)

Language Access Forum

A partnership with [Open Doors for Multicultural Families \(ODMF\)](#) to deliver a virtual series on language access in Washington State.

Spanish, Cantonese and ASL interpretation services were contracted for multilingual participation.



[Language Access Forum webpage](#)

SUSTAIN THOUGHTFUL GROWTH



◆ Investment Projects ◆ BenefitU ◆ Events ◆ Partners for Work



Investment Projects

Funded by Washington State Counties

Language Access

Peter Hayes, developer of the Instant Language Assistant (ILA), provided training and support.

Participating organizations received two ILA's to utilize for accurate and effective language translation.



8 participating agencies

[View the final report](#)

Organizational Development

Wise worked with agencies to support development of customized staff training sites within the Wise Learning Center.



13 participating agencies

DEI Videos

Wise provided mentoring to organizations to develop their capacity to create videos for their storytelling efforts.

Priority was given to stories which featured Black, Indigenous and People of Color (BIPOC), rural or other historically marginalized or under-served communities.



5 participating agencies



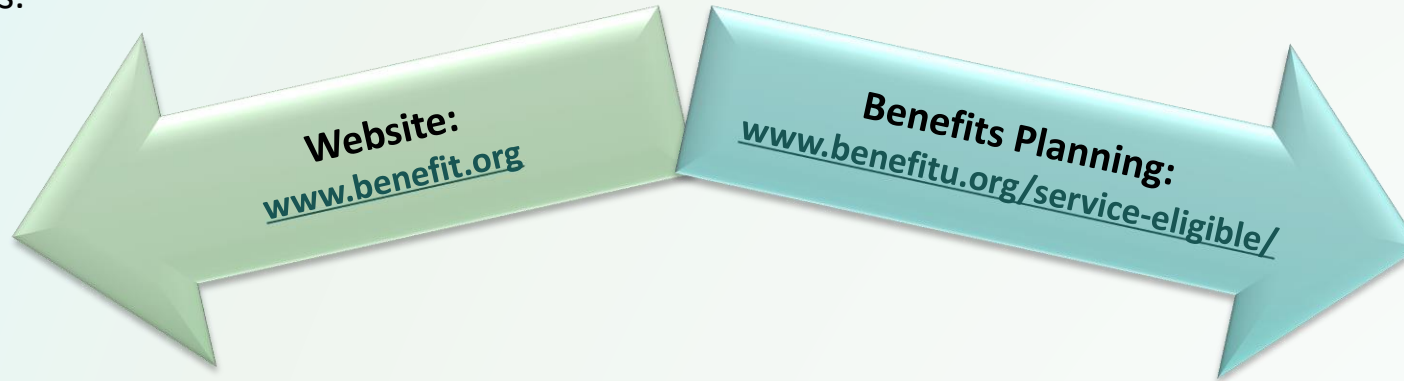
BenefitU

Funded by WA State Developmental Disabilities Administration

BenefitU incorporates a website for access to benefit related trainings and tools, with a service center for access to individualized benefits planning services.

Individual and Family Information

- Videos
- Tools and handouts
- Request Benefits Planning Services



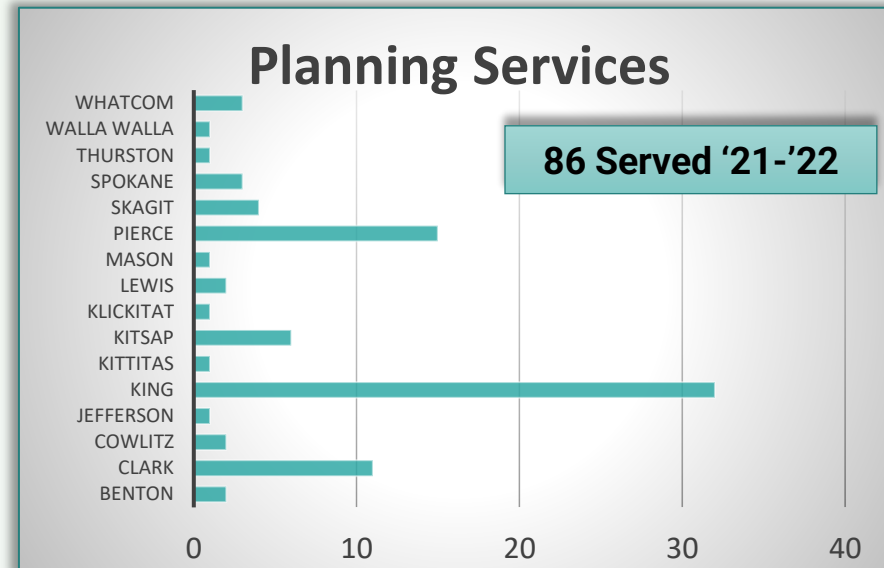
Service Center

- Information and education
- Referrals to a planner, as needed

Website

Visits in the 2021-22 Fiscal Year:

9,584



DDA-Funded Certified Benefits Planning

- Individualized information and reporting
- Support in interacting with government entities



Events

Community Summit Create, Collaborate & Communicate

The ninth annual Community Summit featured ten weekly webinar sessions, virtual games, networking sessions and an exhibitor expo.



COMMUNITY
SUMMIT

Create, Collaborate
& Communicate

715 Attendees

29 Presenters



The Community Summit is sponsored by
DSHS Developmental Disabilities
Administration Roads to Community Living,
WA State Counties and DVR.

King County Legislative Forum

The Legislative Forum briefs elected officials on issues that are important to the disability community.

King County's legislative priorities are presented through community members personal stories



85 Community members

22 Legislators and staffers

Spanish, Cantonese, Somali and ASL interpretation services were contracted for multilingual participation.



Events

Disability Employment Awareness Month Celebrations

Wise partnered with Clark County, the State of Georgia and GA APSE (GAPSE) to host **2** virtual National Disability Employment Awareness Month celebrations.



2021 Employee of the Year, Aaron Bostain, poses with his award

Georgia

Georgia's first annual Employment Awareness Month celebration: **"Work 'Works' for Everyone"** honored people and businesses across the entire state.

Partners include Georgia Department of Behavior Health and Developmental Disabilities (DBHDD), GAPSE, employment providers, Georgia Vocational Rehabilitation Agency (GVRA), Behavioral Health, educators, advocacy groups, employers and other community members.

- **25 nominations were submitted**
- **88 people attended the live event**

[View the recording of the event](#)

Clark County (Washington State)

Clark County's 21st annual celebration : **"Energizing America's Recovery: Powered by Inclusion"**, featured business speakers, video stories and awards.

Partners include the Clark County Developmental Disabilities Advisory Board, local businesses: Ryonet, Clark/Vancouver Television (CVTV) and Clark County Public Transit (C-Tran).

- **32 nominations were submitted**
- **137 people attended the live event**

[Clark County Supported Employment Success Stories YouTube playlist](#)



Partners for Work



A Rotary District 5030 project since 2008 in 28 of 45 Rotary Clubs in King County.

Through PFW, over 140 adults have been hired!

More information on the [Partners for Work webpage](#)

Year in Review:

- Developed a menu of “How Rotary Clubs Can Get Involved”, including job tours/shadows, informational interviews, job seekers attending club meetings for sharing job search goals.
- Broadened job duties of club greeter positions
- Received a 3-year District Level renewal



Mock interviews: Northshore School District students



Mock Interviews: University District Rotary Club

CREATE OPPORTUNITIES FOR PEOPLE WITH DISABILITIES TO LEAD & TEACH





Wise is committed to elevating the voices and expertise of people with disabilities across all initiatives and trainings. Highlights include:



Learning From Our Best Teachers: Individuals with Disabilities Series

A new series highlighting the lived experience of people with disabilities.

12 sessions
14 trainers with disabilities

Watch a clip from presenter Jeff Grace.

Rainer School Project

Wise filmed stories of Rainer School residents and their transition into community and employment.

55% of our webinar sessions featured a presenter with disabilities.

Virtual Community Summit
62% of presenters self-identified as having a disability

"I appreciated that the presentation featured someone who actually receives services, since their thoughts, ideas and experiences offer the most to learn from as service providers."