



WASHINGTON STATE

-LEADING THE WAY FOR EMPLOYMENT FOR ALL!

1880s-1960s

People lived mostly in state-run institutions.
No community supports



1970

People were given options to live in the community with limited supports



1970

Self advocacy organizations began to emerge in the US



1971

WA Education for All Handicapped Children Act (first Education for All law in the US), led to national Individuals with Disabilities Educational Act (1975)



1978

First Annual Ellensburg Employment Conference



1980

University of Oregon developed Supported Employment



1985

Washington Initiative for Supported Employment (WISE) is formed as a federal pilot employment training program



1990s

Movement from group segregated employment to typical work environments began



1990

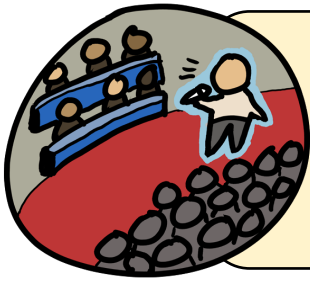
Americans with Disabilities Act signed



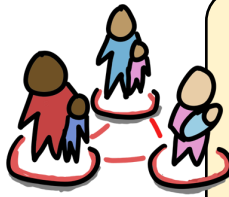
1990s-2000s

National trainers in PASS, PCP, and Employment training brought in, emerging leaders forums began, self-determination demonstration projects, family grants, and other initiatives






1990
King County
hosts the 1st
Legislative
Forum



1990
First Parent
Coalition
formed in
King County

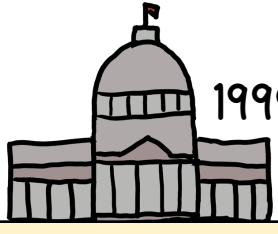
1992
County Guidelines
developed with the
expectation of
community integrated
employment




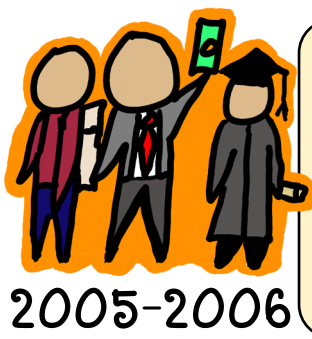
1995
First
Alderbrook
Employment
Forum



1998
Supported Employment in
WA State Government
started

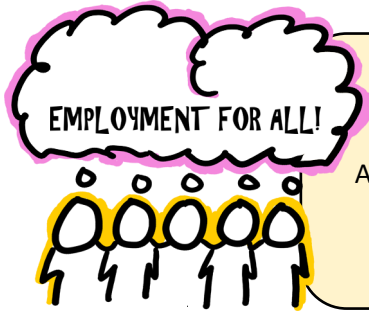


2004-2006
WA State roll-out of the County
Working Age Adult Policy, first
Employment First policy in the country,
now 38 states have EF Policies

King County
School to
Work
program
started – first
in the state

2005-2006




2006-2007
Alderbrook Forums to figure
out how to implement
EMPLOYMENT FOR ALL

hcc **2007**
Highline Community College
Employment Professional
Certification began



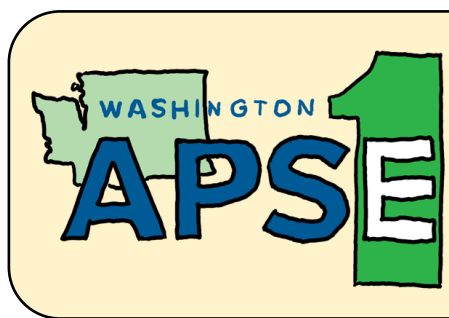
2008
Last Ellensburg
Employment
Conference

2008
King County
Partners for
Work/Rotary
began




Alderbrook
Forum and
State Report/
Plan through
2020

2009-2010



2010
WA State Association
for People Supported
Employment First
(APSE) formed



2012
First WA State Community Summit




2013
Microsoft Supported Employment Program launched



2013
WA State became a National Employment First Mentor State to several Protégé States



2014
Federal guidelines (CMS) required states to ensure access to the community to the same degree as everyone else




2018
DDA/DVR Collaboration MOU



2019
Public funding for sheltered workshops ends




2019
WA expands Healthcare for Workers with Disabilities (HWD)



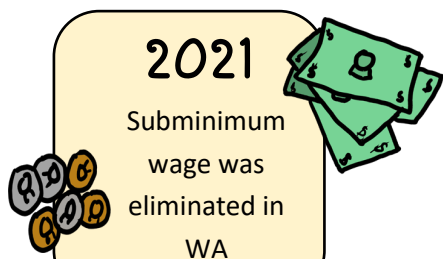
2020
Covid 19 and Online Learning/Gathering/Co-learning and Innovation




2020
Transition Collaborative Report and recommendations (DDA/DVR/OSPI/Stakeholders)




2021
Job Foundations Pilot begins



2021
Subminimum wage was eliminated in WA



2022
Transition collaborative recommendations implemented expanding data sharing and statewide S2W



2023-2024
Dan Thompson Employment Rallies!

2023-2024

